



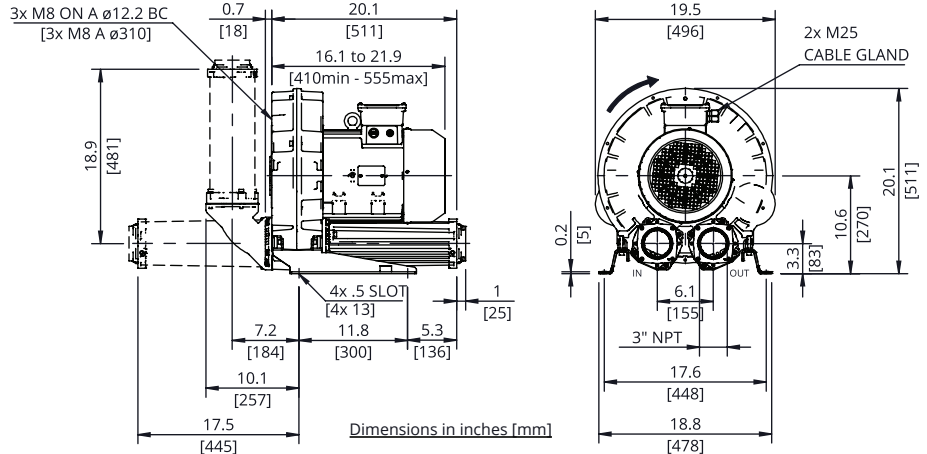
e08-MS

**Evolution Series
Technical Characteristics**

- Premium efficient motor
- High efficiency impeller
- Mountable in any position
- Maintenance free operation
- TEFC (IP55)

Optional Features

- Anodized aluminum components for corrosion resistance
- Increased sealing



Technical Specifications

Model No.	HP	Hz	Open Flow (cfm)	Max Pressure in. H ₂ O	Max Vacuum in. H ₂ O	Efficiency	Voltage	FLA	Starting Current Ratio ¹	dB(A) ²	Weight (lb)
SCL e08-MS-5.5-3	5.5	60	394	40	40	88.5%	208-230/460	14.6-15.1/7.55	11.1	76.8	143.3
		50	331	70	70	88.1%	200/400	17.7/8.86		72.1	
SCL e08-MS-5.5-3-575	5.5	60	394	40	40	88.5%	575	5.31	10.9	76.8	143.3
SCL e08-MS-7.5-3	7.5	60	394	70	80	89.5%	208-230/460	19.8-19.5/9.75	13.7	76.8	167.6
		50	331	110	110	89.2%	200/400	22.2/11.1		72.1	
SCL e08-MS-7.5-3-575	7.5	60	394	70	80	89.5%	575	7.21	13.5	76.8	167.6
SCL e08-MS-10-3	10	60	394	110	110	90.2%	208-230/460	26.1-25/12.5	13	76.8	194.0
		50	331	150	120	90.1%	200/400	28.6/14.3		72.1	
SCL e08-MS-10-3-575	10	60	394	110	110	90.2%	575	10	12.9	76.8	194.0
SCL e08-MS-15-3	15	60	394	170	130	91.0%	208-230/460	38.2-37.3/18.7	12.5	76.8	207.3
		50	331	170	120	91.0%	200/400	43.4 / 21.7		72.1	
SCL e08-MS-15-3-575	15	60	394	170	130	91.0%	575	13.9	11	76.8	207.3

Motors include normally closed thermal protector, 1.15 S.F. (60 Hz), tropicalized windings, Class F (B) insulation, and are suitable for use with a VFD (Contact FPZ for pneumatic and speed limits when used with a VFD).

¹Starting current ratio x fla = starting current

²Noise level measured at a distance of 1 m with inlet and outlet ports piped in accordance to ISO 3744

Data is subject to change without notice.

Recommended Accessories

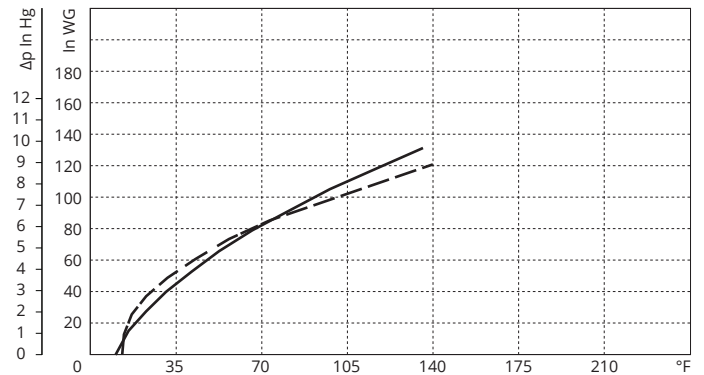
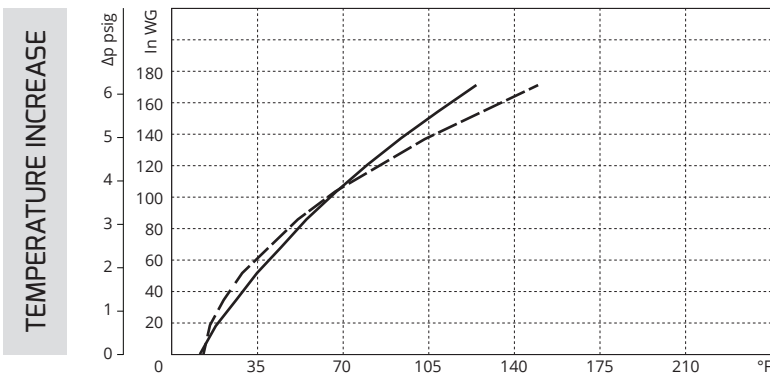
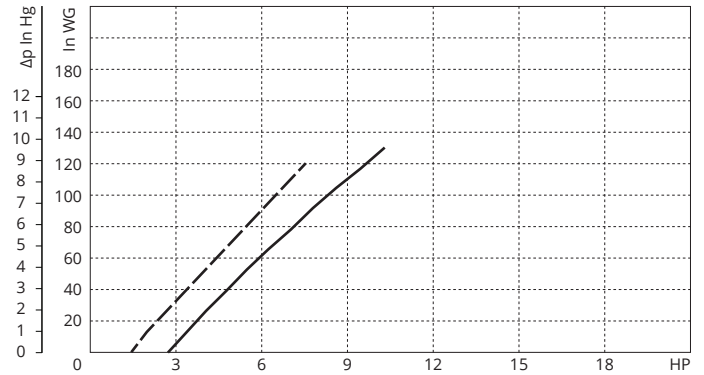
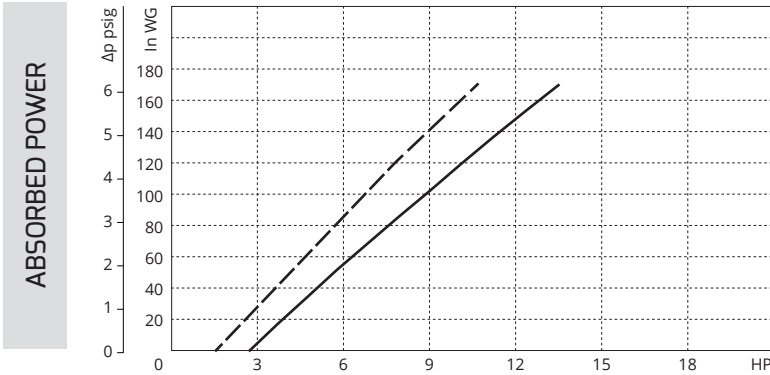
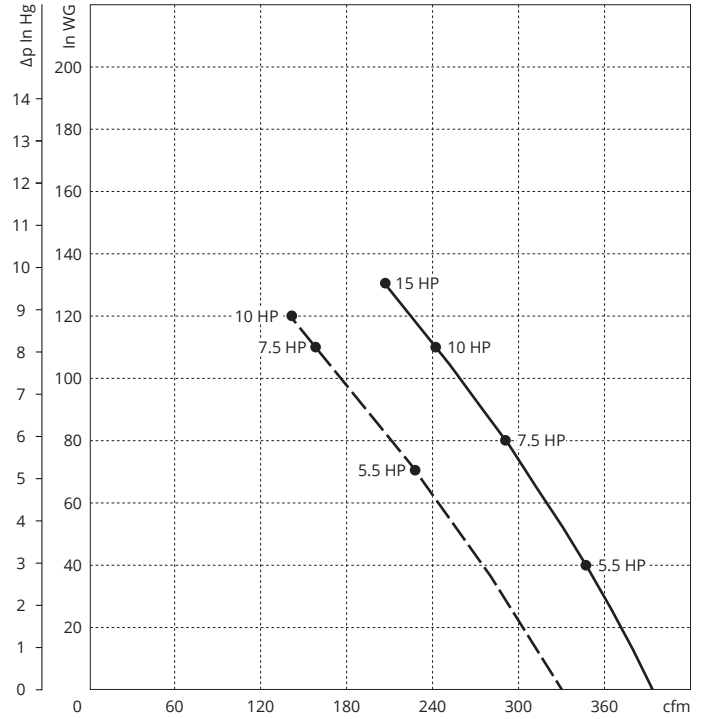
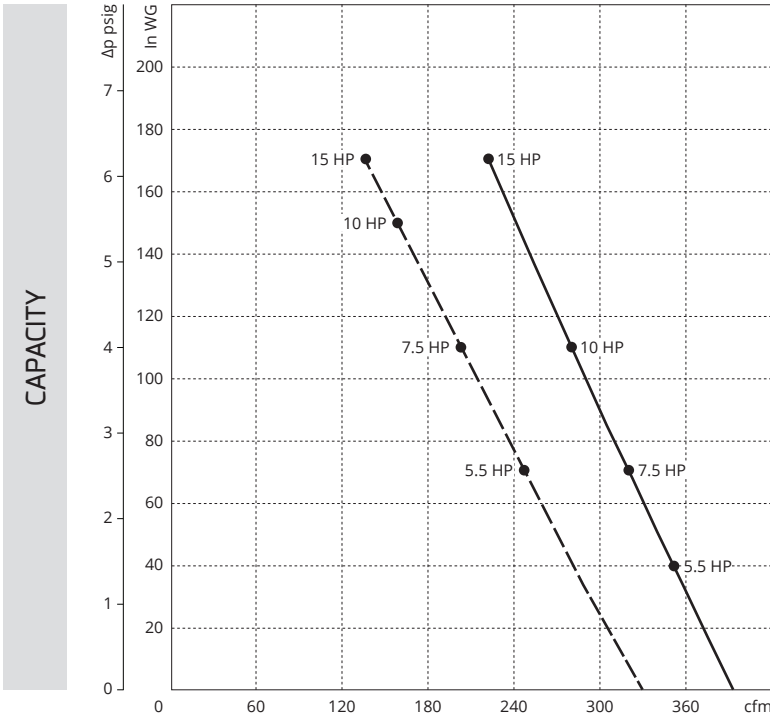
Description	Pressure Safety Valve	Vacuum Safety Valve	Pressure Filter	Vacuum Filter	Check Valve
Part Number	VRL6 (10 HP & 15 HP) ³	VRL6 (15 HP)	FS-235P-300	CT-235P-300C	CV30
	VRL8 (5.5 HP & 7.5 HP) ³	VRL8 (5.5 HP-10 HP)			

³Valve selections are based on 60 Hz and standard air. Valves are supplied uncalibrated. Safety valves are easy to calibrate, but can be ordered with factory calibration.



PRESSURE

VACUUM



Curves refer to air at 68°F temperature and 29.92 In Hg atmospheric pressure (abs) measured at inlet port. Values for flow, power consumption and temperature rise: +/-10% tolerance. Data subject to change without notice.

KEY --- 50 Hz
 ——— 60 Hz