

Metering pumps Model A

Doseuro models A are used in the most severe duty applications. Plunger pumps are the best solution when:

**PUMPED LIQUID DOES NOT CONTAIN
SUSPENDED SOLIDS**

LEAKAGE IS ACCEPTABLE

HIGH PRESSURE IS REQUIRED



Applications

Injection of chemicals as coagulant, fertilizer, acids, polymers, oxygen scavenger, amine and much more.

Commonly used in the following applications:

- Fertigation
- Water treatment
- Paper industry
- Chemical industry
- Food industry
- Cooling towers
- Power plants

Features

- Simplex and multi-head versions are available.
- NPT valve connections are standard. BSP or other connections are available upon request.
- Cataphoresis painting for gearbox.
- Endless screw worm gear box supported by bearings and fully lubricated in an oil bath.
- Fitted as standard with high quality 4 pole electric motor that conform to UL;CSA;UNELMEC specifications, and range from 1/4 – 1 HP. Standard 3 phase voltages are 208-230/460V -60Hz.
- Standard 1 phase voltages are 115/208-230V-60Hz. Motors are available to meet a wide range of alternative specifications including: IEEE841, IEEE45, Explosion proof; different voltages, frequencies, higher insulation standards and more.
- Stroke adjustment can be made with the pump at rest or in operation and it can be manual or an automatic actuator can be driven by a 4-20 mA; different BUS; pneumatically.
- Components in wetted areas are available in a wide range of materials suitable for chemical injection applications.

Pump model	Reducer ratio	SPM	Capacity (gph)	Max pressure (PSig)		Connection
				Metal 1/4 HP	Plastic	
A125U-6	F	70	0.26	290	145	1/2" NPT male
	C	116	0.41			
	B	139	0.51			
A125U-11	I	42	0.74	290	145	1/2" NPT male
	F	70	1.27			
	C	116	1.90			
A125U-18	B	139	2.54	290	145	1/2" NPT male
	I	42	1.90			
	F	70	3.17			
A125U-25	C	116	5.07	290	145	1/2" NPT male
	B	139	6.34			
	I	42	4.17			
A125U-30	F	70	6.97	290	145	1/2" NPT male
	C	116	11.41			
	B	139	13.95			
A125U-38	I	42	5.92	203	145	1/2" NPT male
	F	70	9.83			
	C	116	16.17			
A125U-47	B	139	19.65	131	145	1/2" NPT male
	I	42	9.51			
	F	70	15.85			
A125U-47M	C	116	25.99	80	145	1/2" NPT male
	B	139	31.70			
	I	42	14.79			
A125U-47M	F	70	24.73	80	145	3/4" NPT male
	C	116	40.89			
	B	139	49.45			
A125U-47M	I	42	14.79	80	145	3/4" NPT male
	F	70	24.73			
	C	116	40.89			
A125U-47M	B	139	49.45	80	145	3/4" NPT male

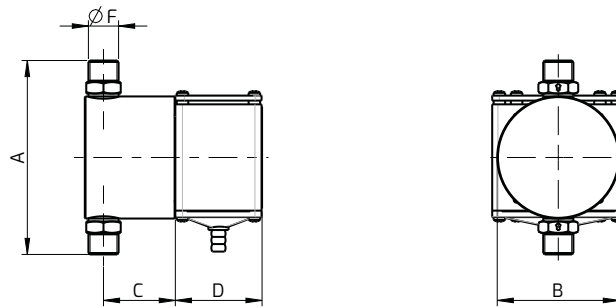
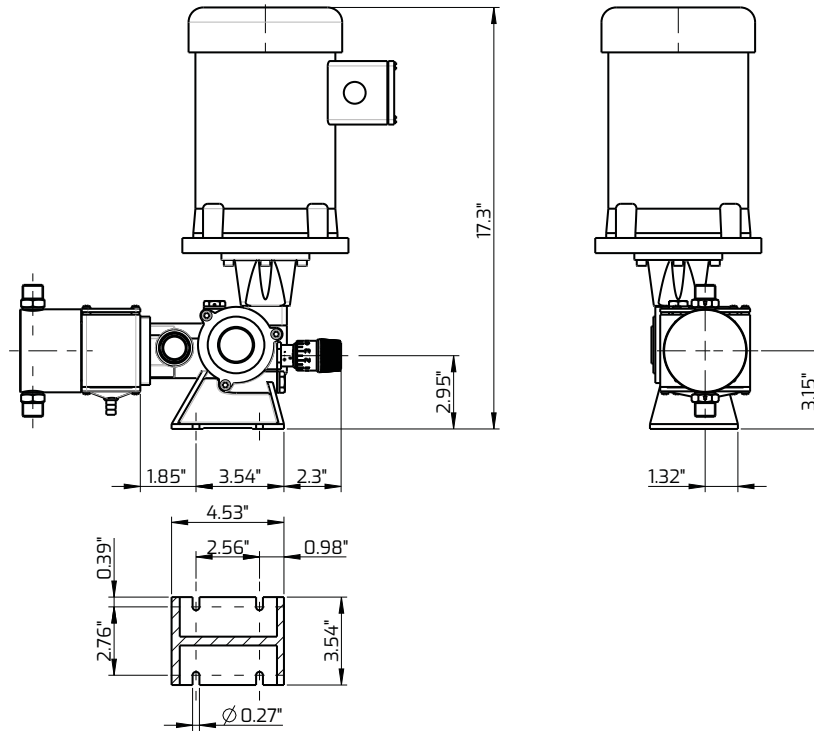
Pump model	Reducer ratio	SPM	Capacity (gph)	Max pressure (PSIg)				Connection
				Metal		Plastic		
				1/3 HP	1/2 HP	1/3 HP	1/2 HP	
A175U-6	F	84	0.41					
	C	116	0.56		290		145	1/2" NPT male
	B	144	0.70					
A175U-11	F	84	1.90					
	C	116	2.54		290		145	1/2" NPT male
	B	144	3.17					
A175U-18	F	84	5.39					
	C	116	7.40		290		145	1/2" NPT male
	B	144	9.51					
A175U-25	F	84	11.73					
	C	116	16.22		290		145	1/2" NPT male
	B	144	20.29					
A175U-30	F	84	16.48					
	C	116	22.72		290		145	1/2" NPT male
	B	144	28.53					
A175U-38	F	84	26.31					
	C	116	36.46	189	290		145	1/2" NPT male
	B	144	45.65					
A175U-47	F	84	41.21					
	C	116	57.06	123	189	123	145	1/2" NPT male
	B	144	71.64					
A175U-47M	F	84	41.21					
	C	116	57.06	123	189	123	145	3/4" NPT male
	B	144	71.64					
A175U-54	F	84	53.26					
	C	116	73.44	94	145	94	145	3/4" NPT male
	B	144	91.93					
A175U-64	F	84	74.81					
	C	116	103.29	65	102	65	102	3/4" NPT male
	B	144	129.34					

Pump model	Reducer ratio	SPM	Capacity (gph)	Max pressure (PSIg)				Connection
				Metal		Plastic		
				¾ HP	1 HP	¾ HP	1 HP	
A250U-25	F	67	13.63					
	C	116	23.25		290		N.A.	1/2" NPT male
	B	134	27.26					
A250U-38	F	67	30.43					
	C	116	52.17		290		N.A.	1/2" NPT male
	B	134	60.87					
A250U-47	F	67	47.55					
	C	116	81.36	247	290	145		¾" NPT male
	B	134	95.10					
A250U-54	F	67	60.87					
	C	116	104.35	189	247	145		¾" NPT male
	B	134	121.73					
A250U-64	F	67	84.32					
	C	116	144.55	138	174	138	145	1" NPT male
	B	134	168.65					
A250U-76	F	67	121.41					
	C	116	208.11	94	125	94	125	1" NPT male
	B	134	242.83					
A250U-89	F	67	165.16					
	C	116	283.19	70	91	70	91	1" NPT male
	B	134	330.32					
A350U-89	F	67	230.89					
	C	116	395.73	N.A.	58	N.A.	58	1 1/2" NPT male
	B	134	462.20					

Wetted parts code for standard materials

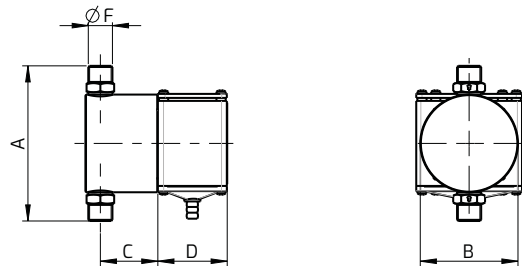
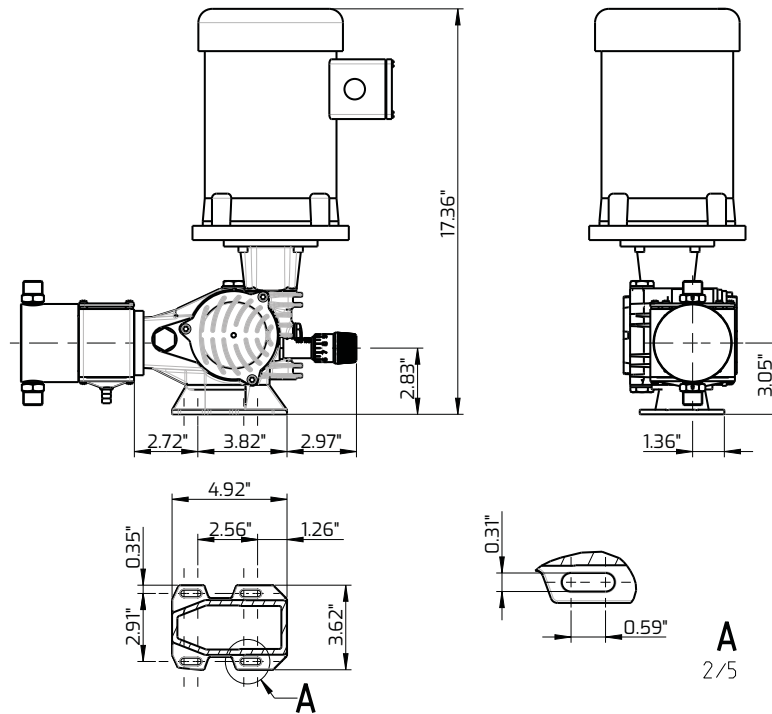
Standard construction materials (wetted parts only)						
Material codes	Pump head	Plunger	Plunger gasket	Valve ball	Valve seat	Valve gasket
11	S.S.316L	S.S.316L	NBR	S.S.316L	S.S.316L	FPM
13	PVC	Ceramic	FPM	Pyrex	PVC	FPM
17	S.S.316L	Ceramic	FPM	S.S.316L	S.S.316L	FPM
19	S.S.316L	S.S.316L	FPM	S.S.316L	S.S.316L	FPM
20	PVC	S.S.316L	NBR	Pyrex	PVC	FPM
21	S.S.316L	S.S.316L	PTFE	S.S.316L	S.S.316L	FPM

A125U



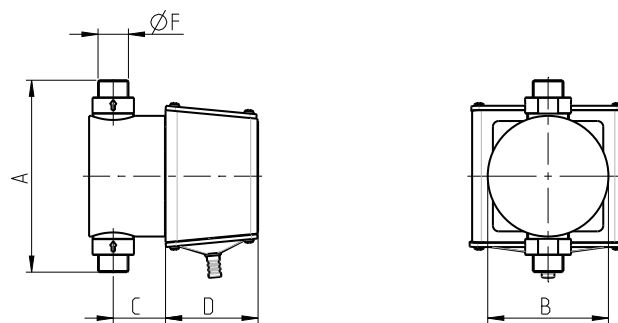
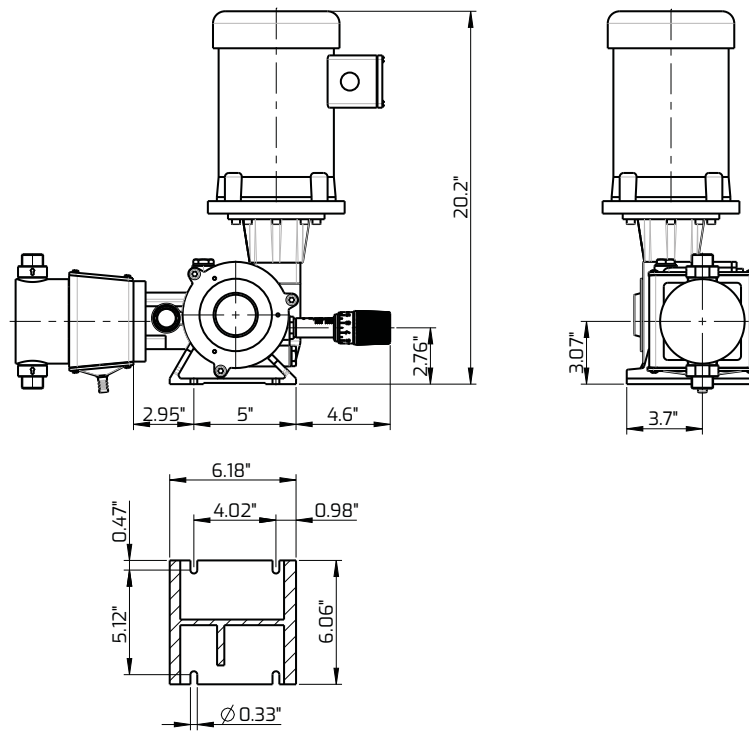
Pump model	Stainless Steel Configuration						Plastic Configuration					
	A	B	C	D	øF	lb	A	B	C	D	øF	lb
A 125U-06	4.96"	2.76"	1.57"	2.36"	1/2" NPT	25.8	5.47"	2.95"	1.57"	2.36"	1/2" NPT	24.6
A 125U-11	4.96"	2.76"	1.57"	2.36"	1/2" NPT	25.8	5.47"	2.95"	1.57"	2.36"	1/2" NPT	24.6
A 125U-18	4.96"	2.76"	1.38"	2.36"	1/2" NPT	25.8	5.47"	2.95"	1.65"	2.36"	1/2" NPT	24.6
A 125U-25	4.96"	2.76"	1.57"	2.36"	1/2" NPT	26.9	5.67"	3.15"	1.61"	2.36"	1/2" NPT	24.6
A 125U-30	4.72"	2.76"	1.57"	2.36"	1/2" NPT	26.9	7.52"	3.58"	1.61"	2.36"	1/2" NPT	24.6
A 125U-38	4.31"	3.35"	1.97"	2.36"	1/2" NPT	29	7.87"	3.94"	2.09"	2.36"	1/2" NPT	25.7
A 125U-47	4.31"	3.35"	1.97"	2.36"	1/2" NPT	26.9	7.87"	3.94"	2.09"	2.36"	1/2" NPT	26.8
A 125U-47 M	4.31"	3.35"	1.97"	2.36"	3/4" NPT	32.4	6.73"	4.33"	2.09"	2.36"	3/4" NPT	29

A175U



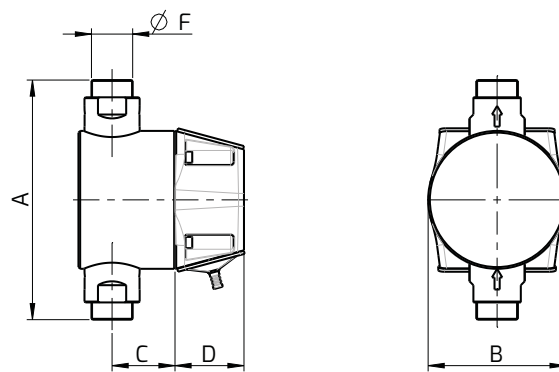
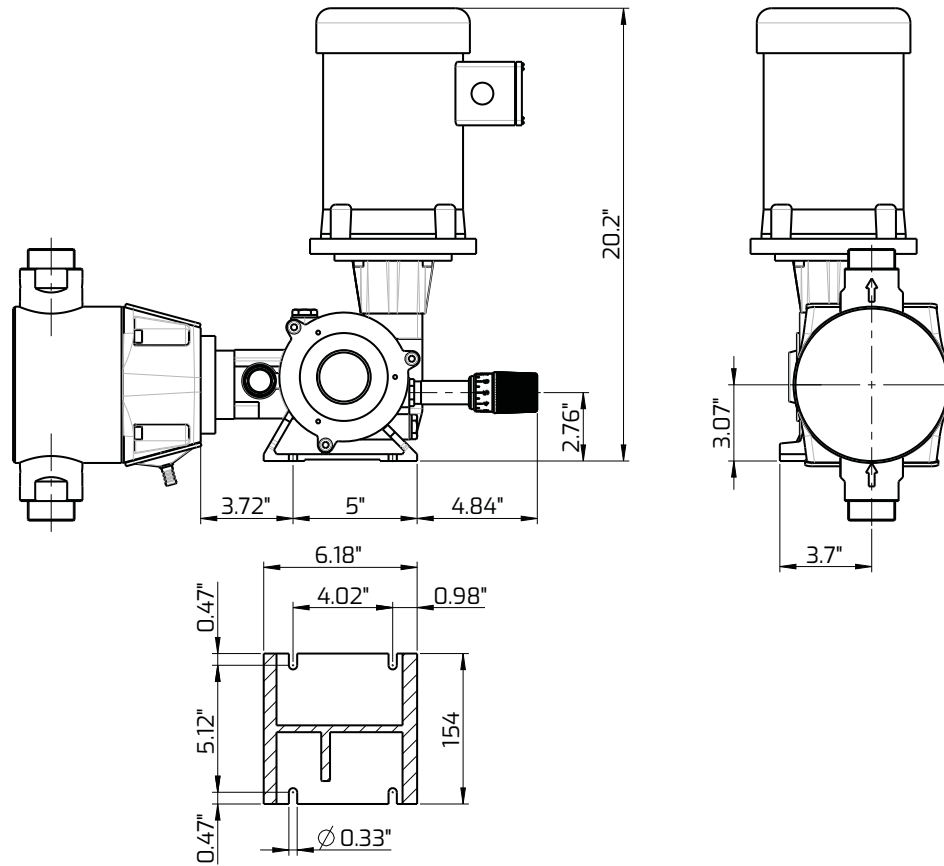
Pump model	Stainless Steel Configuration						Plastic Configuration					
	A	B	C	D	øF	lb	A	B	C	D	øF	lb
A 175U-06	4.96"	2.76"	1.57"	2.36"	1/2" NPT	31.2	5.47"	2.95"	1.57"	2.36"	1/2" NPT	29
A 175U-11	4.96"	2.76"	1.57"	2.36"	1/2" NPT	31.2	5.47"	2.95"	1.57"	2.36"	1/2" NPT	29
A 175U-18	4.96"	2.76"	1.38"	2.36"	1/2" NPT	30.1	5.47"	2.95"	1.65"	2.36"	1/2" NPT	29
A 175U-25	4.96"	2.76"	1.57"	2.36"	1/2" NPT	30.1	5.67"	3.14"	1.61"	2.36"	1/2" NPT	27.9
A 175U-30	4.72"	2.76"	1.57"	2.36"	1/2" NPT	33.4	5.67"	3.58"	1.61"	2.36"	1/2" NPT	29
A 175U-38	5.31"	3.35"	1.93"	2.36"	1/2" NPT	32.3"	7.87"	3.94"	2.09"	2.36"	1/2" NPT	30.1
A 175U-47	5.31"	3.35"	1.97"	2.36"	1/2" NPT	31.2	7.87"	3.94"	2.09"	2.36"	1/2" NPT	29
A 175U-47 M	6.02"	3.74"	1.97"	2.36"	3/4" NPT	31.9	6.73"	3.94"	2.09"	2.36"	3/4" NPT	33.4
A 175U-54	6.73"	4.29"	1.97"	3.14"	3/4" NPT	40.1	7.13"	4.72"	2.16"	3.14"	3/4" NPT	35.7
A 175U-64	6.73"	4.29"	1.97"	3.14"	3/4" NPT	42.3	7.13"	4.72"	2.16"	3.14"	3/4" NPT	35.7

A250U

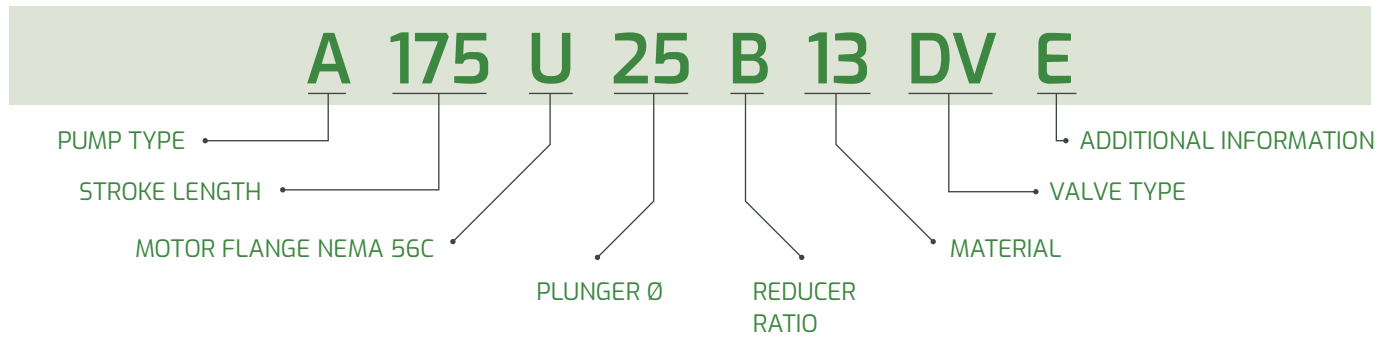


Pump model	Stainless Steel Configuration						Plastic Configuration					
	A	B	C	D	øF	lb	A	B	C	D	øF	lb
A 250U-25	6.10"	4.13"	1.10"	3.14"	1/2" NPT	65.2	-	-	-	-	-	-
A 250U-38	6.10"	4.13"	1.77"	3.14"	1/2" NPT	67.4	-	-	-	-	-	-
A 250U-47	6.49"	4.13"	1.77"	3.14"	3/4" NPT	68.5	7.13"	4.72"	1.77"	3.14"	3/4" NPT	61.9
A 250U-54	6.73"	4.29"	2.36"	3.14"	3/4" NPT	70.7	7.52"	5.11"	2.16"	3.14"	3/4" NPT	63
A 250U-64	8.82"	4.72"	2.36"	3.14"	1" NPT	76.2	9.33"	5.51"	2.76"	3.14"	1" NPT	66.3
A 250U-76	9.29"	5.12"	2.56"	3.14"	1" NPT	79.5	9.33"	5.51"	2.76"	3.14"	1" NPT	67.4
A 250U-89	9.84"	5.51"	2.56"	3.14"	1" NPT	86.1	9.84"	5.98"	2.87"	3.14"	1" NPT	72.9

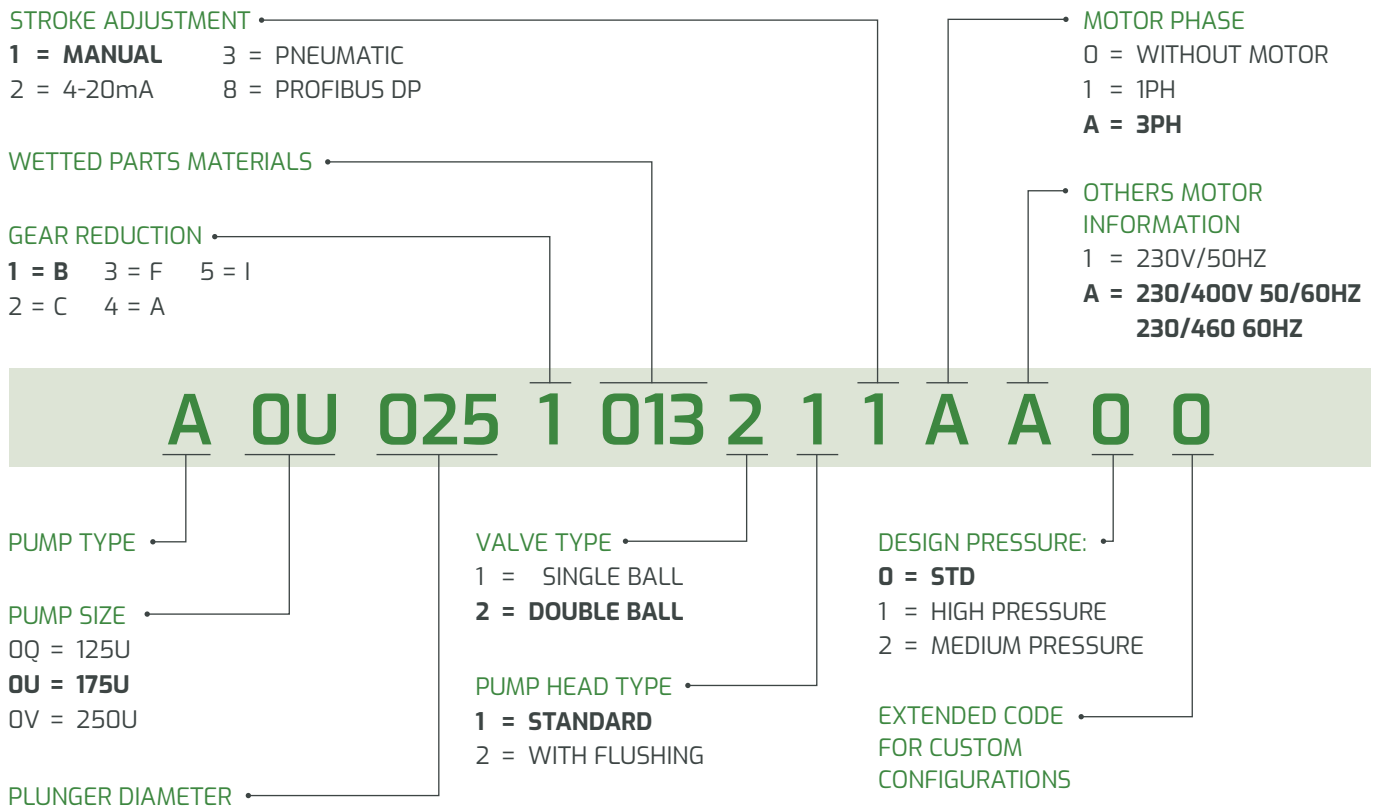
A350U



Pump model	Stainless Steel Configuration						Plastic Configuration					
	A	B	C	D	$\varnothing F$	lb	A	B	C	D	$\varnothing F$	lb
A 350U-89	10.94"	6.3"	2.87"	3.15"	1 1/2" NPT	101.6	11.42"	6.69"	2.87"	3.15"	1 1/2" NPT	80.6



How to read the pump code



Data is for reference only and subject to change without notice.



SIMPLIFIED FLUID HANDLING

FPZ, Inc
 150 N. Progress Drive,
 Saukville WI 53080, U.S.A.

Tel +1 262 268-0180
 usa@fpz.com
www.fpzusa.com