

Metering pumps Model A for high pressure

Doseuro models A are used in the most severe duty applications. Plunger pumps are the best solution when:

PUMPED LIQUID DOES NOT CONTAIN
SUSPENDED SOLIDS

LEAKAGE IS ACCEPTABLE

HIGH PRESSURE IS REQUIRED



Applications

Injection of chemicals as oxygen scavenger, amine, trisodium phosphate and much more.

Commonly used in the following applications:

- Chemical industry
- Cooling towers
- Power plants

Features

- Simplex and multi-head version are available.
- NPT valve connections are standard. BSP or other connections are available upon request.
- Cataphoresis painting for gearbox.
- Endless screw worm gear box supported by bearings and fully lubricated in an oil bath.
- Fitted as standard with high quality 4 pole electric motor that conform to UL;CSA;UNELMEC specifications, and range from 1/4 – 1 HP. Standard 3 phase voltages are 208-230/460V -60Hz.
- Standard 1 phase voltages are 115/208-230V-60Hz. Motors are available to meet a wide range of alternative specifications including: IEEE841, IEEE45, Explosion proof; different voltages, frequencies, higher insulation standards and more.
- Stroke adjustment can be made with the pump at rest or in operation and it can be manual or an automatic actuator can be driven by a 4-20 mA; different BUS; pneumatically.
- Components in wetted areas are available in a wide range of materials suitable for chemical injection applications.

General specifications

Pump model	Reducer ratio	SPM	Capacity (gph)	Max pressure (PSIg)		Connection
				1/4 HP	1/3 HP	
A125U-8	I	42	0.34	1378	3336	1/2" NPT male
	F	70	0.58			
	C	116	0.98			
	B	139	1.17			
A125U-12	I	42	0.82	1276	2466	1/2" NPT male
	F	70	1.37			
	C	116	2.27			
	B	139	2.73			
A125U-14	I	42	1.11	943	1813	1/2" NPT male
	F	70	1.85			
	C	116	3.12			
	B	139	3.74			
A125U-16	I	42	1.48	725	1392	1/2" NPT male
	F	70	2.48			
	C	116	4.12			
	B	139	4.95			

Pump model	Reducer ratio	SPM	Capacity (gph)	Max pressure (PSIg)		Connection
				1/3 HP	1/2 HP	
A175U-8	F	84	1.03	1378	3336	1/2" NPT male
	C	116	1.43			
	B	144	1.78			
A175U-12	F	84	2.32	1378	3336	1/2" NPT male
	C	116	3.20			
	B	144	3.99			
A175U-14	F	84	3.57	1378	2480	1/2" NPT male
	C	116	4.86			
	B	144	6.12			
A175U-18	F	84	4.65	1088	1900	1/2" NPT male
	C	116	6.37			
	B	144	7.99			
A175U-18	F	84	5.31	856	1479	1/2" NPT male
	C	116	7.29			
	B	144	9.07			

Pump model	Reducer ratio	SPM	Capacity (gph)	Max pressure (PSig)		Connection
				¾ HP	1 HP	
A250U-12	F	67	2.69	1378	3336	1/2" NPT male
	C	116	4.60			
	B	134	5.36			
A250U-14	F	67	3.67	1378	3336	1/2" NPT male
	C	116	6.29			
	B	134	7.32			
A250U-16	F	67	4.81	1378	2843	1/2" NPT male
	C	116	8.19			
	B	134	9.51			
A250U-18	F	67	6.08	1378	2248	1/2" NPT male
	C	116	10.41			
	B	134	12.14			
A250U-20	F	67	7.50	1378	1827	1/2" NPT male
	C	116	12.87			
	B	134	14.99			
A250U-22	F	67	9.09	1146	1508	1/2" NPT male
	C	116	15.59			
	B	134	18.20			

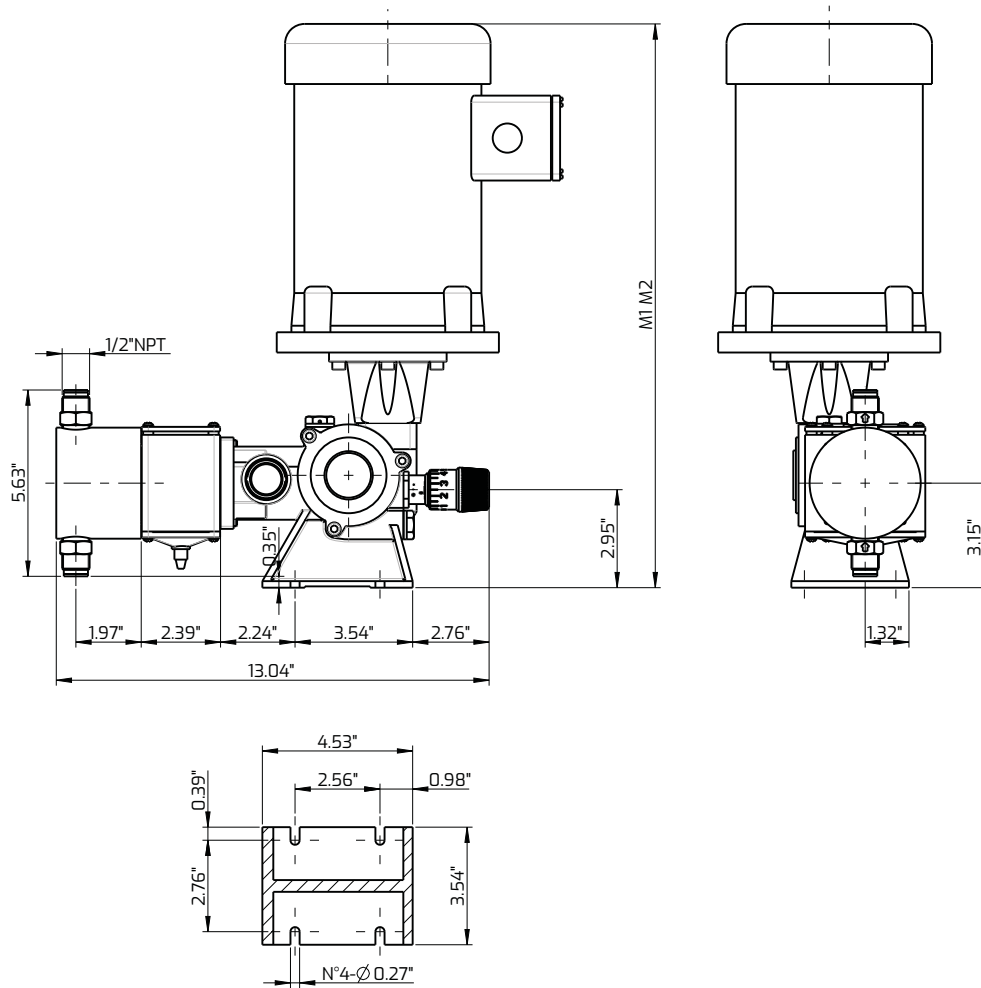
Wetted parts code for standard materials

Standard construction materials (wetted parts only)

Material codes	Pump head	Plunger	Plunger gasket	Valve ball	Valve seat	Valve gasket
82	S.S.316L	S.S.316 (K22)	PTFE/FKM	Ceramic	S.S.316L	PTFE or similar

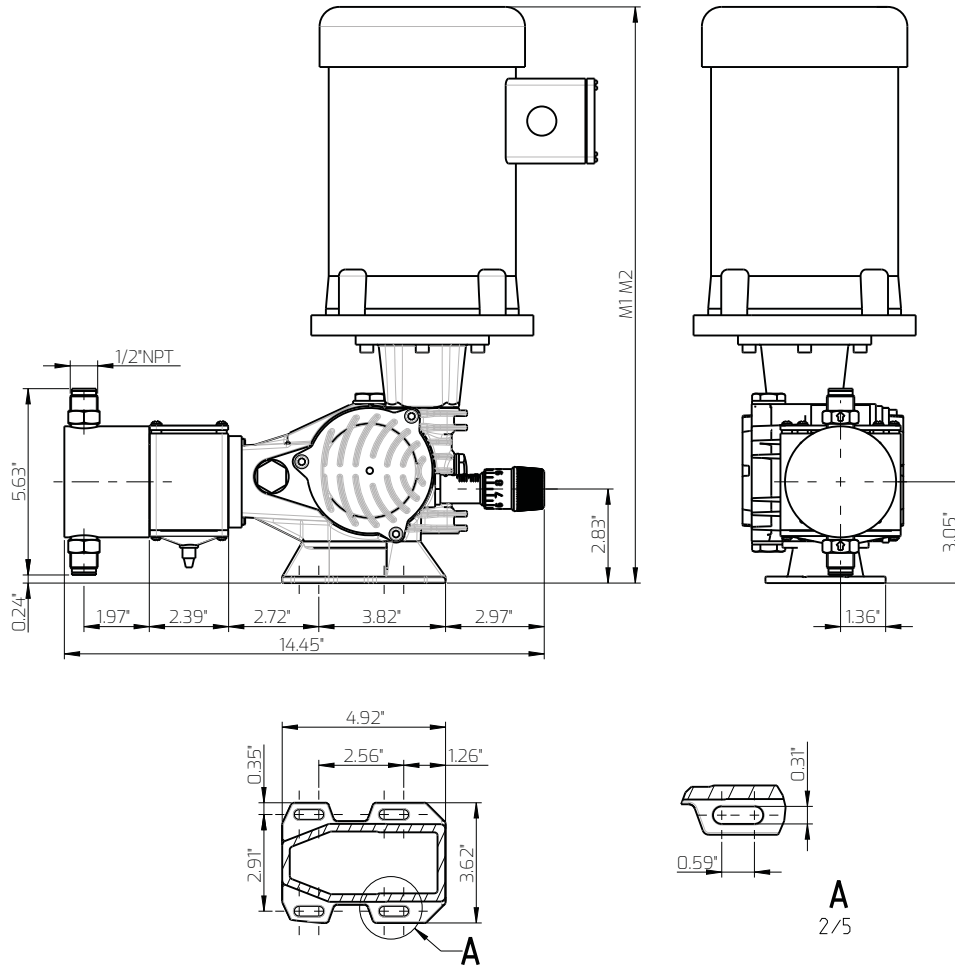
Dimensions

A125U



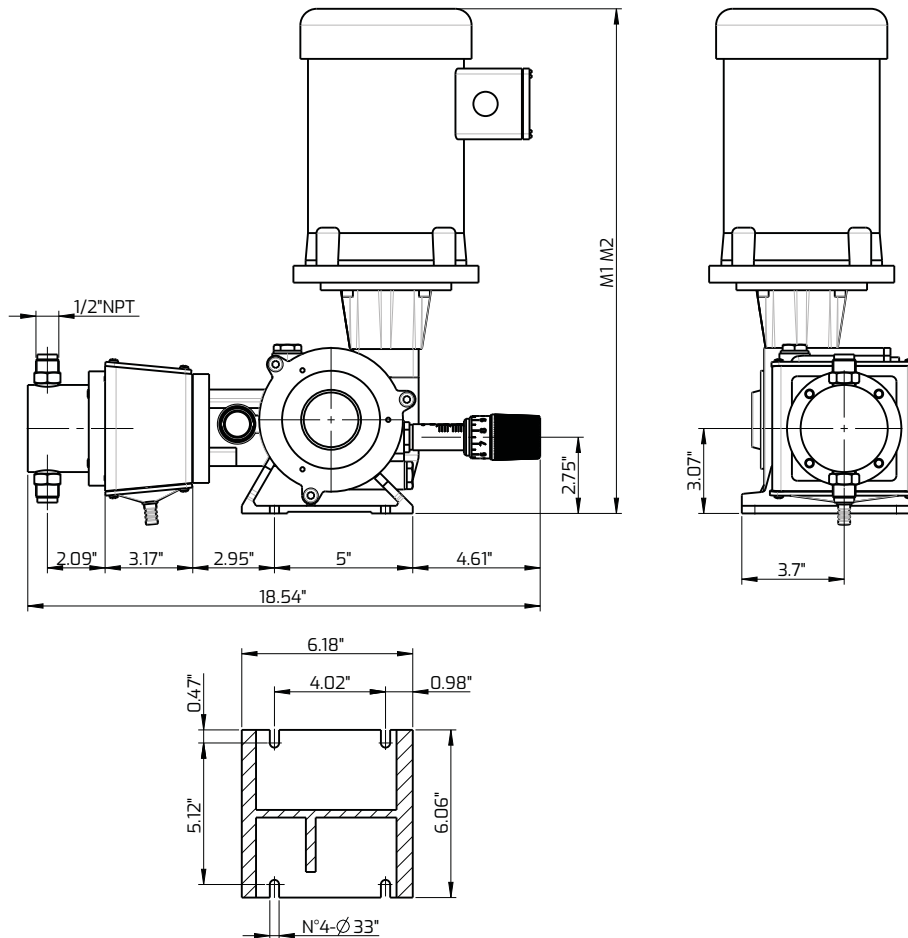
Pump model	Electric motor			
	1/4 HP		1/3 HP	
	M1	lb	M2	lb
A 125U-06	17.3"	30.4	17.3"	32.1
A 125U-08	17.3"	30.4	17.3"	32.1
A 125U-12	17.3"	30.4	17.3"	32.1
A 125U-14	17.3"	30.6	17.3"	32.3
A 125U-16	17.3"	30.6	17.3"	32.3

A175U



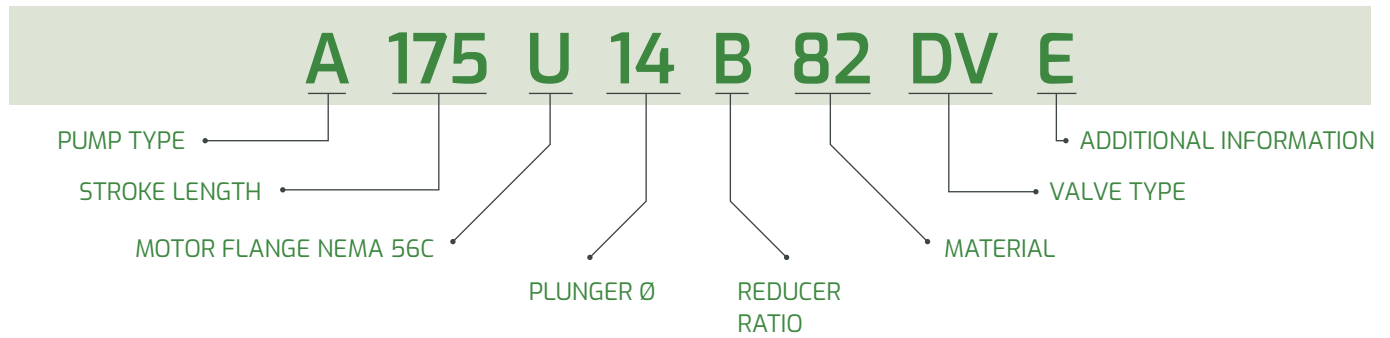
Pump model	Electric motor			
	1/3 HP		1/2 HP	
	M1	lb	M2	lb
A 175U-06	17.36"	34.6	17.36"	35.7
A 175U-08	17.36"	34.6	17.36"	35.7
A 175U-12	17.36"	34.6	17.36"	35.7
A 175U-14	17.36"	34.8	17.36"	35.9
A 175U-16	17.36"	34.8	17.36"	35.9
A 175U-18	17.36"	34.8	17.36"	35.9

A250U

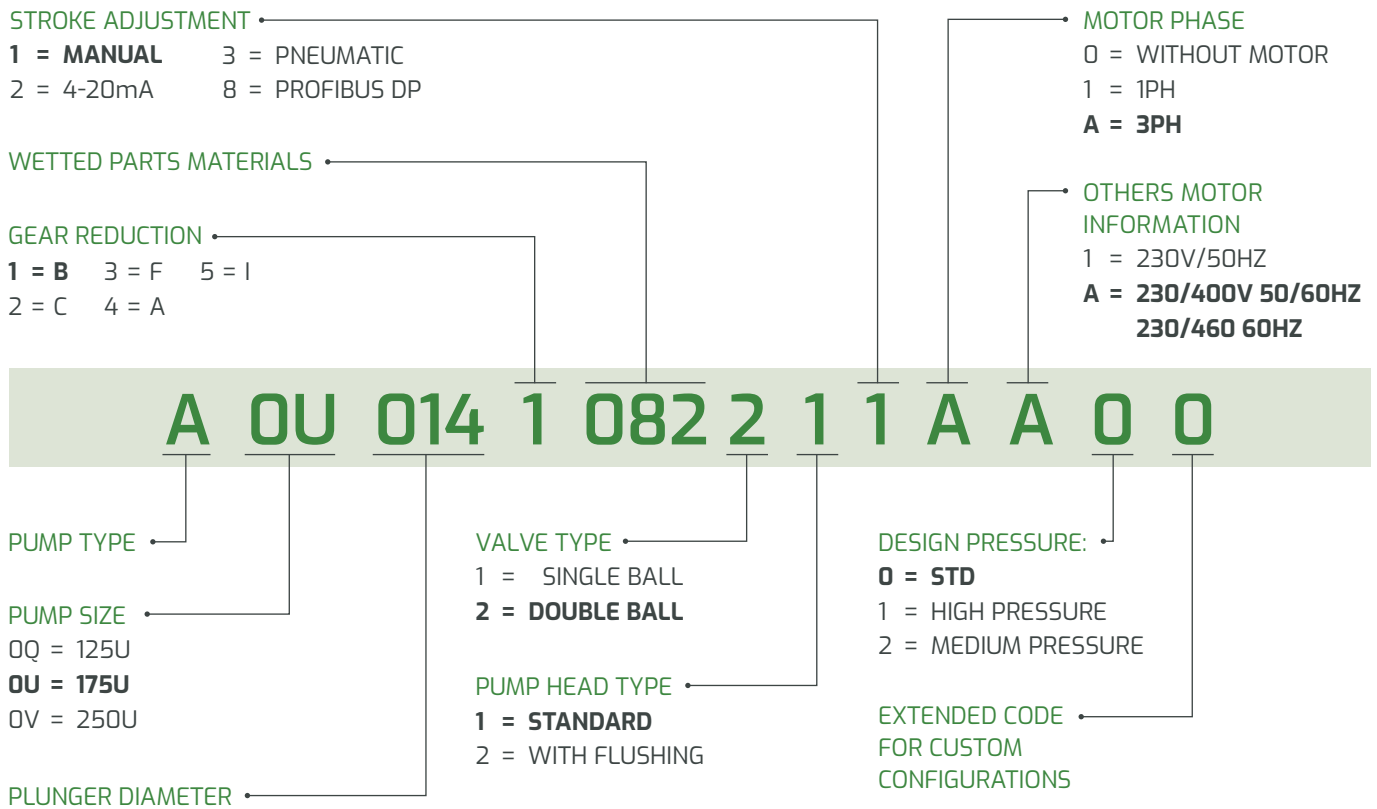


Pump model	Electric motor			
	3/4 HP		1 HP	
	M1	lb	M2	lb
A 250U-08	20.2"	65.4	20.2"	68.7
A 250U-12	20.2"	65.4	20.2"	68.7
A 250U-14	20.2"	65.4	20.2"	68.7
A 250U-16	20.2"	65.6	20.2"	68.9
A 250U-18	20.2"	65.6	20.2"	68.9
A 250U-20	20.2"	65.6	20.2"	68.9
A 250U-22	20.2"	65.6	20.2"	68.9
A 250U-25	20.2"	65.6	20.2"	68.9

How to read the pump model



How to read the pump code



Data is for reference only and subject to change without notice.



SIMPLIFIED FLUID HANDLING

FPZ, Inc
 150 N. Progress Drive,
 Saukville WI 53080, U.S.A.

Tel +1 262 268-0180
 usa@fpz.com
www.fpzusa.com